



TufGuard 800

Liquid Applied Single Component Elastomeric Waterproofing Membrane.

Uses

TufGuard 800 is a single component high performance waterproofing membrane with high elasticity and low water permeability. **TufGuard 800** is particularly suitable for a wide range of applications including wet areas, foundations, basements, terraces, retaining walls, bridge abutments, planters, inverted roofs, and remedial repairs to felt, asphalt, concrete, fibrous cement or other roof structures when protected from exposure to direct sunlight.

Typical Applications & Advantages

- Can be applied to a range of substrates.
- Excellent adhesion and thermal stability.
- Outstanding resistance to oxidation and brittlement.
- High elasticity, ensuring a permanently flexible barrier over a wide range of temperatures.
- High build properties ensure rapid application.
- No requirements of joints.

Standards Compliance

TufGuard 800 complies with the requirements of the following standards:
ASTM D 412.

Product Description

TufGuard 800 is a highly elastic tough waterproofing system based on modified bitumen's, co-polymers and a carrier solvent. It is highly resistant to aggressive soils and soluble salts providing an effective continuous barrier and protection against waterborne damage. This is ideally suited as a vapour/salt barrier to building facades behind granite, marble, stone cladding, and curtain wall elements.

Typical Properties

Colour	: Black
Specific Gravity	: 1.1
Tensile Strength (ASTM D 412)	: 2.5N/mm ²
Cure Time	: Approx. 24hrs
Crack bridging	: Max. 2mm.
Elongation at break (ASTM D 412)	: 900%

Technical Support

GIC provides a comprehensive technical support service to specifiers, end users, and contractors and is able to offer on-site technical assistance.

Instructions for Use

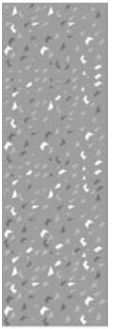
Surface Preparation: - Surfaces to which **TufGuard 800** to be applied must be clean from dirt, dust, rust, voids, honeycombs, protrusions, or any other material, which may impair adhesion. Where moss or lichen is present, treat with proper fungicidal wash to kill spores and inhibit further growth. Following treatment, wash area thoroughly with clean water and allow drying. Fillets must be provided at corners or sharp angles using 4:1 sand and cement mortar modified with a good quality-bonding agent.

Priming: Normally not required on good quality, well-prepared substrates.

Cracks: All shrinkage and non-structural cracks must be treated with not less than 1.5mm coating of **TufGuard 800** extending 75mm either side of the crack. Allow to cure overnight prior to general application.

Application: **TufGuard 800** should be applied by brush to obtain a continuous unbroken film. Two coats are required with the second coat applied at right angles after the first coat has cured. **TufGuard 800** must be protected from mechanical damage during subsequent construction or backfilling works. Any damage may be repaired by spot application. If a water flood test is to be run, the membrane should cure for a minimum of 10 days. Whilst **TufGuard 800** is resistant to frost, adhesion will be impaired if applied to frosted substrates. Application should be avoided if substrate temperatures are below 5° C or rain is imminent.

Cleaning: Application equipment should be thoroughly cleaned after use with Xylene or similar solvents. Spillages should be absorbed with sand, vermiculite or similar and be disposed of in accordance with local regulations.





TufBond

Coverage

Coverage rates vary according to the density, porosity, texture, ambient temperature, etc. of the substrate to be treated. Typically, a coverage rate of 1litre/m²/coat at 0.55mm D.F.T.

Packaging & Storage

TufGuard 800 is supplied in 20 litre units and it has a minimum shelf life of 12 months provided it is stored under cover, out of direct sunlight.

Health & Safety Precautions

TufGuard 800 does not fall into the hazard classifications of current regulations. However, it should not be swallowed or allowed to be exposed to skin and eyes. Suitable protective gloves and goggles should be worn. Splashes on the skin should be removed with water. In case of contact with eyes rinse immediately with plenty of water and seek medical advice. If swallowed seek medical attention immediately – do not induce vomiting.

For further information, refer to the Material Safety Data Sheet available for this product.

Important note

GIC endeavors to ensure that the technical information contained herein is true, accurate and represents our best knowledge and experience. No warranty is given or implied, as GIC has no control over the conditions of use and the competence of any labor involved in the application are beyond our control.

As all GIC technical data sheets are updated on a regular basis it is the customer's responsibility to check that the product is suitable for the intended application, and that the actual conditions of use are in accordance with those recommended.

Rev: October 2007

**Gulf International
Chemicals SAOG**

FACTORY & H.O.

P.O.BOX 132,

PC 124, Rusayl

Sultanate of Oman

Tel: +968 24446800

Fax: +968 24446808

Email:

gulfint@omantel.net.om

**Gulf International
Chemicals**

REGIONAL OFFICE

P.O BOX: 98175,

DUBAI,

UAE

Tel: +971 4 2583221

Fax: +971 4 2583220

Email:

gic_dxb@emirates.net.ae



AN ISO 9001:2000 CERTIFIED COMPANY

www.gicomman.com