



TuffFlow SP 609

High Range Superplasticiser for High Initial Workability and High Slump Retention.

Uses

- To provide initial workability especially with low water cement ratio.
- To significantly improve the initial workability of site mixed concrete without increasing water demand.
- To provide improved durability by increasing ultimate strengths and reducing concrete permeability.
- To have high slump retention with early setting time.

Typical Applications & Advantages

- Powerful plasticizing action with an improved initial workability.
- Makes possible major reductions in water: cement ratio which allow the production of high strength concrete without excessive cement contents.
- Improved cohesion and particle dispersion minimizes segregation and bleeding and improves pumpability.
- Long haul and hot weather concreting.
- Gains early strength with very high slump retention.

Standards Compliance

TuffFlow SP 609 complies with the requirements of the following standards:
ASTM C494 as Type A, Type D & Type G depending on dosage used.

Product Description

TuffFlow SP 609 is specifically meant for concrete with low water cement ratio, high slump retention and high early strength concrete. This is a specially modified superplasticizer to produce a cohesive concrete. This may be used to effect substantial water reductions to concrete with out affecting the normal setting times.

Typical Properties

Appearance	: Dark brown/ Black liquid
Specific Gravity	: 1.24@ 25±2 ⁰ C

Technical Support

GIC provides a comprehensive technical support service to specifiers, end users and contractors and is able to offer on-site technical assistance.

Instructions for Use

Compatibility

TuffFlow SP 609 can be used for all types of Portland cement and for use with any other special cements contact GIC.

Dosage

The optimum dosage of **TuffFlow SP 609** to meet specific requirements should always be determined by trials using the materials and conditions that will be experienced in use. The normal dosage range is between 0.4 to 2.3litres/100 kg of cementitious material.

Dosages outside the normal range quoted above can be used to meet particular mix requirements. Contact GIC for advice in these cases.

Setting

TuffFlow SP 609 affords excellent control over initial and final setting times. Setting times of concrete mixes are related to cement type, mix design and ambient temperature.

Effects of Over Dosage

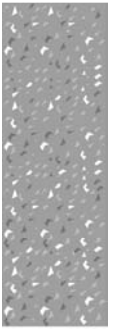
A severe over dosage of **TuffFlow SP 609** may result in the following:

- Extended workability in retention.
- Retardation of initial and final set.
- Increase in air entrainment.

Provided it is properly cured, the ultimate strength of the concrete will not be adversely affected and will generally be higher than for normal concrete. The retarding effects of very high dosage will be exaggerated with SR cement.

Packaging & Storage

TuffFlow SP 609 is available in 20litre & 210 litre drums. For site installations, deliveries will be made in bulk to site storage tanks. **TuffFlow SP 609** has a minimum shelf life of 12 months provided it is stored under cover, out of direct sunlight.





TufBond

Health & Safety Precautions

TuffFlow SP 609 does not fall into the hazard classifications of current regulations. However, it should not be swallowed or allowed to come into contact with skin and eyes. Suitable protective gloves and goggles should be worn. Splashes on the skin should be removed with water. In case of contact with eyes rinse immediately with plenty of water and seek medical advice. If swallowed seek medical attention immediately – do not induce vomiting.

For further information refer the Material Safety Data Sheet available for this product.

Important note

GIC endeavors to ensure that the technical information contained herein is true, accurate and represents our best knowledge and experience. No warranty is given or implied, as GIC has no control over the conditions of use and the competence of any labor involved in the application are beyond our control.

As all GIC technical data sheets are updated on a regular basis it is the customer's responsibility to check that the product is suitable for the intended application, and that the actual conditions of use are in accordance with those recommended.

Rev: October 2007

**Gulf International
Chemicals SAOG**

FACTORY & H.O.

P.O.BOX 132,

PC 124, Rusayl

Sultanate of Oman

Tel: +968 24446800

Fax: +968 24446808

Email:

gulfint@omantel.net.om

**Gulf International
Chemicals**

REGIONAL OFFICE

P.O BOX: 98175,

DUBAI,

UAE

Tel: +971 4 2583221

Fax: +971 4 2583220

Email:

gic_dxb@emirates.net.ae



AN ISO 9001:2000 CERTIFIED COMPANY

www.gicomman.com