



TufGuard DG

Highly Penetrative Solvent Based Silane Siloxane Treatment for Concrete and Masonry

Uses

- Used as a penetrating sealer for concrete and masonry surfaces.
- Used to reduce the passage of water and waterborne salts whilst allowing moisture vapour to dissipate to the atmosphere.
- Used as a waterproofing sealer.

Typical Applications & Advantages

- To reduce the penetration of chlorides and sulphates into reinforced concrete
- For sealing white and precast concrete
- Reduces efflorescence
- Waterproofing sealer for edges of stone and marble
- As a primer for protective coatings.
- Highly penetrative clear, non staining sealer.
- No change in surface appearance/ texture
- Integral protection cannot delaminate or degrade.

Product Description

TufGuard DG is a single component penetrating treatment for concrete and masonry surfaces. The reactive silane siloxane component is carried in an optimum concentration of hydrocarbon solvent. **TufGuard DG** works by penetrating into the pores of concrete or masonry and reacting with moisture or water vapour that is present there; a hydrophobic siloxane lining to the capillary pores is produced.

The hydrophobic treatment is very effective in reducing the passage of water and waterborne salts whilst allowing moisture vapour to dissipate to the atmosphere. The treatment is clear and does not discolour commonly encountered substrates.

Typical Properties

Specific gravity	: 0.80 @ 25±2°C
Appearance	: Colourless liquid.

Technical Support

GIC provides a comprehensive technical support service to specifiers, end users and contractors and is able to offer on-site technical assistance.

Instructions for Use

Surface preparation: All surfaces to be treated should be fully cured, dry and free from laitance, traces of mould oil or curing compounds. Oil, grease and previous coatings must be mechanically removed. If the concrete or masonry is washed after cleaning it must be allowed to dry before application of **TufGuard DG** commences. Substrates may be damp but not wet.

Application: **TufGuard DG** may be used directly from the container. No dilution with water or solvent is required however the contents of the container should be mixed before use. Apply by low-pressure spray or brush ensuring complete surface coverage. On vertical surfaces apply flood coats starting at the bottom of the panel and working upwards. A minimum of two coats is required; these should be consecutively applied, 'wet on wet'. A maximum of 2 hours over coating time is permissible. Conduct a trial area to ensure there is no discolouration of the substrate to be treated.

Watch Points

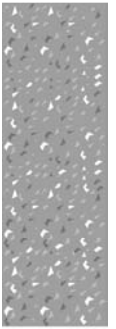
- Surfaces must be clean and dry.
- High winds are detrimental to even application and will increase wastage; erect wind breaks if required.
- Since it is solvent based, ensure adequate ventilation.

Coverage

These will vary considerably in accordance with the porosity of the substrate being treated. Typical consumption will be 3-6m²/ litre/ coat. Two coats are recommended. Site trials should be conducted to determine requirements for procurement.

Packaging & Storage

TufGuard DG is available in 20 & 210 litre drums and it has a minimum shelf life of 12 months provided it is stored under cover, out of direct sunlight.





TufBond

Health & Safety Precautions

TufGuard DG is non-toxic; however, it is advisable to wear goggles when spraying. Inhalation of spray should be avoided. In the case of excessive skin, contacts wash with soap and water and apply skin-conditioning cream. In case of contact with eyes, flush with clean water. If irritation persists, obtain medical advice, if product is swallowed – do not induce vomiting, obtaining medical attention immediately.

For further information, refer the Material Safety Data Sheet available for this product.

Important note

GIC endeavors to ensure that the technical information contained herein is true, accurate and represents our best knowledge and experience. No warranty is given or implied, as GIC has no control over the conditions of use and the competence of any labor involved in the application are beyond our control.

As all GIC technical data sheets are updated on a regular basis it is the customer's responsibility to check that the product is suitable for the intended application, and that the actual conditions of use are in accordance with those recommended.

Rev: October 2007

Gulf International Chemicals SAOG

FACTORY & H.O.

P.O.BOX 132,

PC 124, Rusayl

Sultanate of Oman

Tel: +968 24446800

Fax: +968 24446808

Email:
gulfint@omantel.net.om

Gulf International Chemicals

REGIONAL OFFICE

P.O BOX: 98175,

DUBAI,

UAE

Tel: +971 4 2583221

Fax: +971 4 2583220

Email:
gic_dxb@emirates.net.ae



GIC



AN ISO 9001:2000 CERTIFIED COMPANY

www.gicomman.com